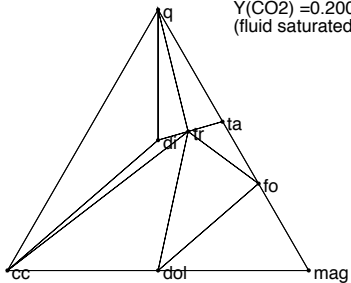
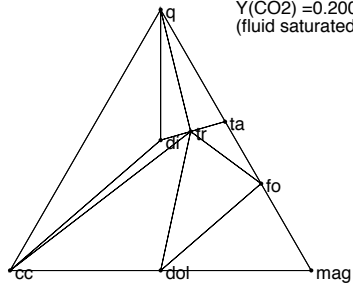


$P(\text{bar}) = 0.300\text{E}+04$
 $T(\text{K}) = 830.$
 $Y(\text{CO}_2) = 0.200$
(fluid saturated)



$P(\text{bar}) = 0.300\text{E}+04$
 $T(\text{K}) = 840.$
 $Y(\text{CO}_2) = 0.200$
(fluid saturated)



$P(\text{bar}) = 0.300\text{E}+04$
 $T(\text{K}) = 865.$
 $Y(\text{CO}_2) = 0.200$
(fluid saturated)

